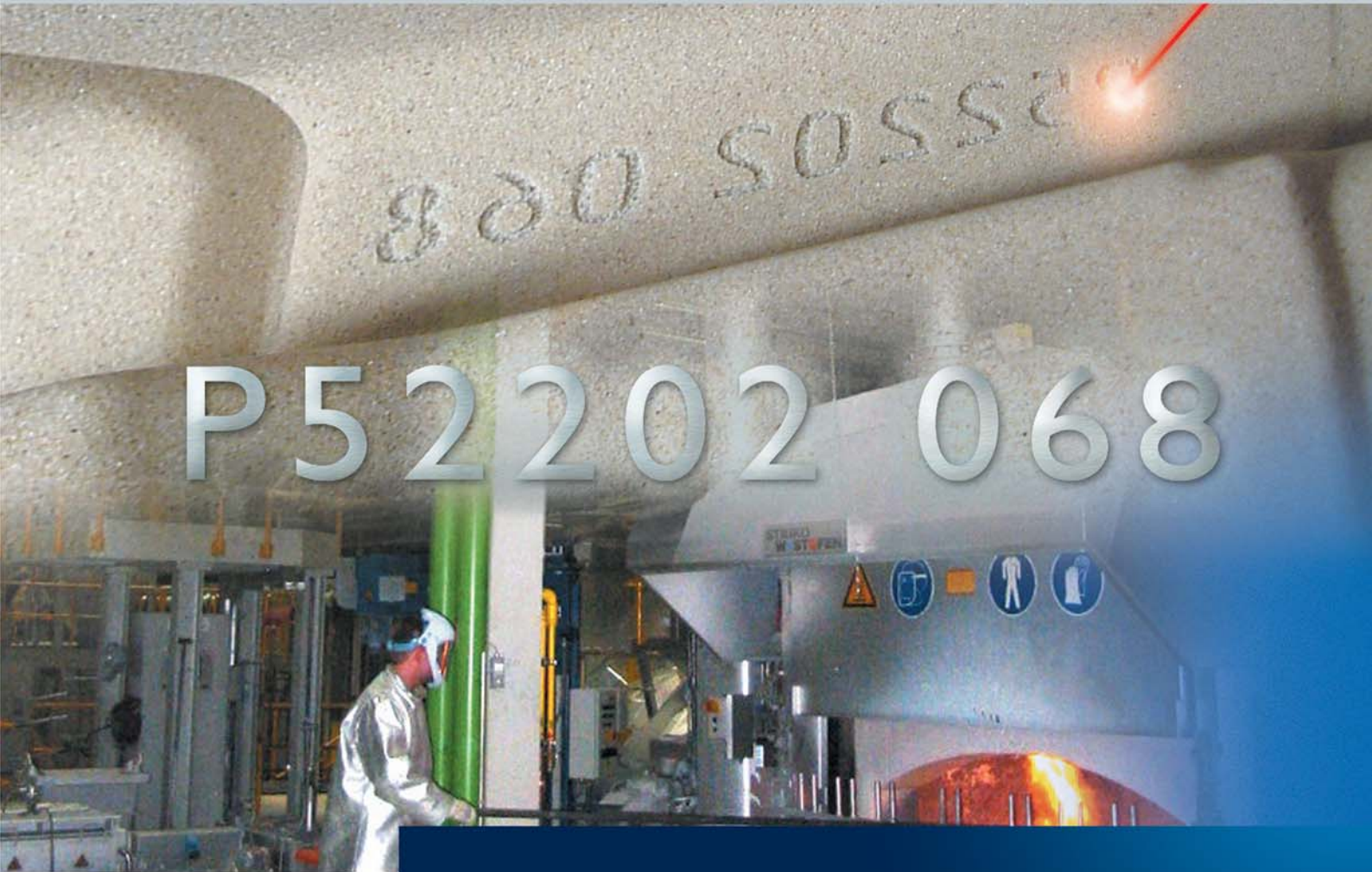




# PTS

## PART TRACE SYSTEM



Systematic tracing through secure and distinct identification - as individual as your process!

# PART TRACE SYSTEM - for maximum production transparency in the casting industry!

## Systematic tracing of cast parts by means of secure and distinct identification

A perfect production analysis as it is practiced in the automotive industry, for example, is now possible in the casting industry as well. The PART-TRACE-SYSTEM developed by KÖHL guarantees secure product tracing through the entire casting process even under the most difficult environmental conditions.

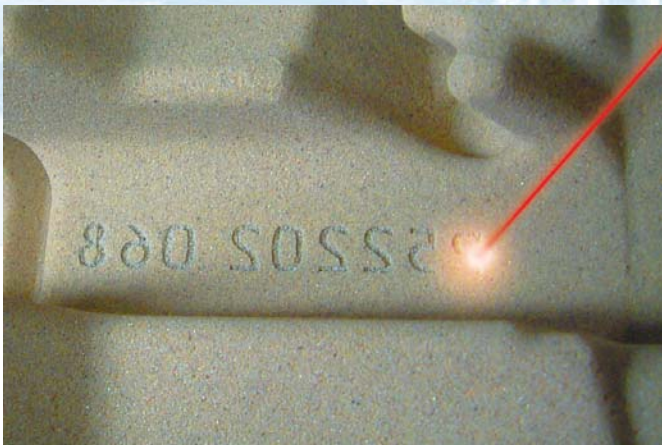
## Extremely high process safety

The basis for the system is the permanent and distinct identification of the cast parts, which enables an absolutely secure tracing of the production parameters under which the cast part was produced. The intelligent linking of the decentrally acquired information with a databank as well as the illustration of the material flow with the help of a data management system complete the requirements placed on a modern foundry.

Core making

Casting

Hot treatment



### Distinct identification with lased ID-numbers

The marking of greensand and coldbox-sand is realized by means of a heavy-duty laser. This reliable technique prevents a mechanical influence on the work piece, which means that precise and easy to read letter contours are obtained in the casting. Company logo, special symbols as well as consecutive numbers may be lased neutral to the cycle time. The permanent three-dimensional ID-number is the basis for continuous allocation of relevant data during the process.



### Casting detection by means of scanning

The ID-numbers are detected by means of 3D-surface scanners that are operating at all production relevant positions.

They distinguish themselves through extremely high production safety. Different material surfaces are scanned regardless of the production status of the cast part. Varying lighting conditions have no impact on the accuracy and reliability.

## KÖHL Data Management System

The implementation of PTS-data into the KÖHL Data Management System is realized in an ideal fashion: the optimum solution for managing as well as timely acquisition and recording of all production relevant data.

## Your advantage with the Part-Trace-System

**High production transparency**

**Quality optimisation**

**Extremely high process safety**

**Simple analysis of production data**

## Used in the extended foundry market

**Automotive supplier industry**

**Steel industry**

**Aluminium industry**

**Heavy clay industry**

Preparation

Ageing

Processing

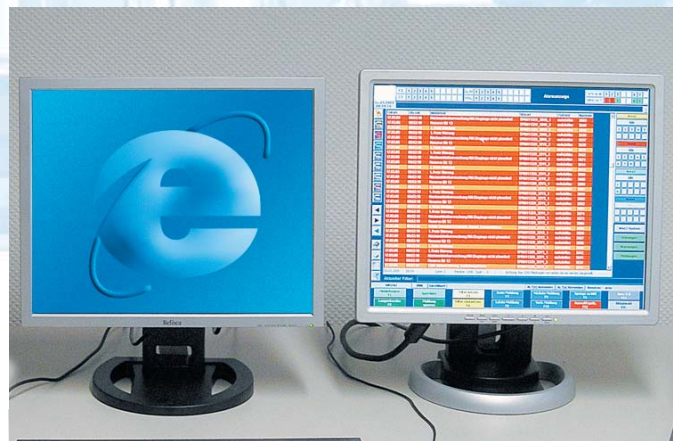
Shipping



### Parametered software for individual customers

The software for letter recognition is designed according to customer requirements. It has been tried and tested and distinguishes itself through stable functions. Corrective algorithms more or less preclude the incorrect detection of ID-numbers.

The link to superimposed structures is possible without any problems.



### Simple analysis of the process parameters

Under what kind of process parameters was the cast part manufactured? What are the actual consumption data? These questions can be easily and quickly answered with PTS.

Due to the use of web interface with open standards, the timely online-access and the tabular analysis of data are extremely simple. Browser and standard programs are all you need.

## INFO • CONTACT

### **KÖHL Group**

17, Am Scheerleck

6868 Wecker

Luxembourg

Tel.: +352 71 99 71 - 5000

Fax: +352 71 99 71 - 5009

info@koehl.eu

www.koehl.eu



Additional information